

DVBSBridge Pro for DreamBox – installation and configuration

Table of contents

Installation	3
Preconditions	3
Upgrade from previous version of DVBSBridge Pro for DreamBox	3
DVBSBridge Pro for DreamBox Installation	3
Channels scan in MCE	7
Scanning procedure for European users (countries with DVB-T support)	7
Scanning procedure for North American users (and all users from the countries without DVB-T support)	8
DVBSBridge and Vista MediaCenter with TV Pack 2008	8
Guide a la Carte	8
How it works	8
EPG source configuration	9
XMLTV sources configuration	10
XMLTV file management	13
Make changes effective	13
UPNP Server	13
XMLTV file generation	13
Enable XMLTV file generation in DVBSBridge	13
Make changes effective	13
Import XMLTV data in XP MCE 2005	14
Troubleshooting	14
Troubleshooting during installation	14
Troubleshooting communication with DreamBox	14
Troubleshooting during channel scanning	14
DVBSBridge Frequency Detector	14
Usage	15
Registration	15
Registration	Error: Reference source not found

Introduction

DVBSBridge products combine ease of use of Windows MCE with the versatility and reliability of dedicated digital TV appliances and applications. DVBSBridge seamlessly integrates satellite (DVB-S) and cable (DVB-C) TV sources into Media Center, including support for MPEG-2 and MPEG-4 HD video, multichannel audio, multitrack audio, EPG information, teletext and subtitles. DVBSBridge enables all native TV control features of MCE for these sources such as Guide listings, live TV watching, pausing live TV, one touch and timer recordings.

Next to that DVBSBridge provides a unique *Guide a la Carte* feature. It allows per-channel configuration of EPG information source. For each channel, provided by DVBSBridge, user can select where the EPG information comes from – from MCE built-in Guide service, from transport stream, from dreambox itself or from XMLTV file.

DVBSBridge Pro for DreamBox uses dreambox as a source of digital stream. It works best with dreamboxes running *PLi* and *Gemini* images.

Installation

Preconditions

Your current user has to have Administrator privileges.

If you are running under Vista turn off UAC.

Upgrade from previous version of DVBSBridge Pro for DreamBox

If you are upgrading from the previous version of DVBSBridge Pro for DreamBox, you should do the following before you start installation of the new version:

- Save your existing **dbmcebridge_channels.ini** (from <<current installation path of DVBSBridge>>\Sources\DreamBox). You will need this file after the installation to restore your channel mappings.
- Save your existing **ChannelMap.xml** (from <<current installation path of DVBSBridge>>\EPG\Input). You will need this file after the installation to restore your XMLTV channel linking.
- If you have changed default configuration values of DVBSBridge Pro for DreamBox source plugin, please remember those changes. You will have to reapply them after installation completes.
- ***Uninstall existing version of DVBSBridge for DreamBox, uninstall DVBSBridge service from Control Panel and reboot the computer as prompted.***

DVBSBridge Pro for DreamBox Installation

1. Set up your DreamBox

Please make sure that you have set up your DreamBox before you start installation of DVBSBridge Pro for DreamBox. During dreambox setup you have to configure satellites/cable providers, scan channels and add channels, which you would like to make available via DVBSBridge, to TV bouquets.

By default DVBSBridge Pro for DreamBox makes use of all channels from all TV bouquets of DreamBox (the actual names of bouquets do not matter).

It is possible also to specify that DVBSBridge should take channels only from “DVBSBridge” bouquet. This can be done via DVBSBridge Configuration Utility.

After you have set up and configured DreamBox *put it into standby mode*.
It is also strongly recommended not to control DreamBox with the remote when it is used in combination with DVBSBridge. This may disturb normal DVBSBridge operations.

2. Connect DreamBox to your MCE computer

For DVBSBridge Pro for DreamBox to work correctly, computer, which runs DVBSBridge and MCE, and DreamBox should be able to communicate with each other via network. Please refer to the DreamBox manual on how to set up its network connection.

The following things are important to set up correctly:

- DreamBox should not make use of DHCP. Assign a static IP address to it.
- It is strongly recommended that communication path between DreamBox and MCE does not make use of WiFi. Usage of network cables is strongly encouraged for a proper video quality.

Once the network communication between DreamBox and MCE computer is set up, test it by opening browser and typing IP address of DreamBox into browser’s address bar. If communication was setup correctly you should see web control interface of your DreamBox in browser window.

3. Install DVBSBridge service

To install DVBSBridge service start *DVBSBridge_x32.msi* installation file (use *DVBSBridge_x64.msi* if you are installing DVBSBridge on 64-bit Vista). Once it is started you will be presented with the installation wizard. Follow the instructions of this wizard to install the software.

In course of installation you may be prompted by operating system whether to continue installation of unsigned (unverified) drivers. Answer Yes or Continue to these questions.

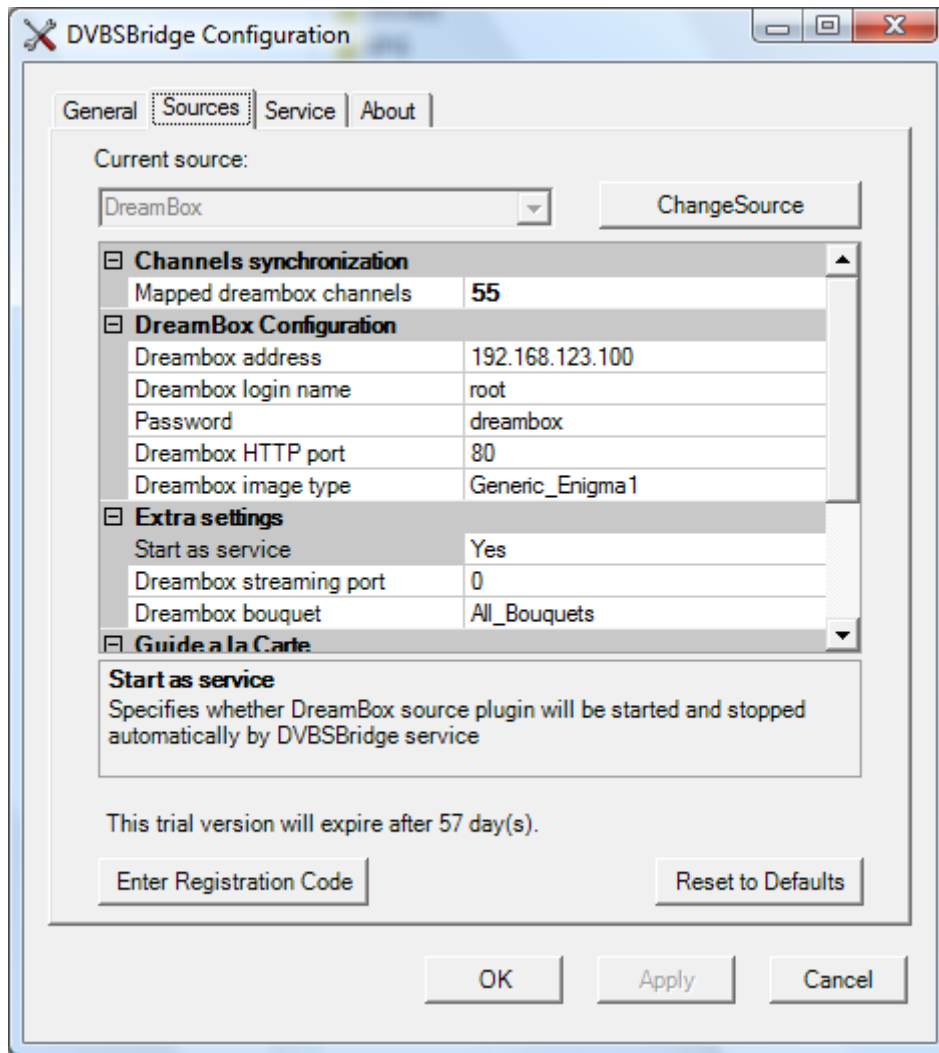
Once installation is completed you will be prompted to reboot the system. ***Please reboot***. When system is rebooted, proceed with DVBSBridge Pro for DreamBox source plugin installation.

4. Install DVBSBridge Pro for DreamBox

To install DVBSBridge Pro for DreamBox, start *DVBSBridgeDBPro.msi* installation executable. Once it is started you will be presented with the installation wizard. Follow the instructions of this wizard to install the software.

5. DreamBox configuration

When DVBSBridge Pro for DreamBox installation wizard completes it will automatically launch DVBSBridge Configuration Utility. On the *Sources* tab you can see your registration information and validity of the trial version:



- Enter IP address of your DreamBox into *Dreambox address* field.
- Select whether you would like to synchronize channels from all DreamBox TV bouquets or only DVBSBridge bouquet (*Dreambox bouquet* setting).
- Select correct type of your DreamBox image (*Dreambox image type* setting)
 - o This option allows you to select between Enigma1 and Enigma2 based images. Please note that *Neutrino* image is not supported.

Leave all other parameters as is unless you have changed them in DreamBox configuration itself.

6. (optional) For users with motorized satellite dish

Users with motorized satellite dish should set *Wait for signal timeout* value to 10-15 seconds, depending on the speed of the motor

7. Apply configuration changes

Press Apply button to apply configuration changes.

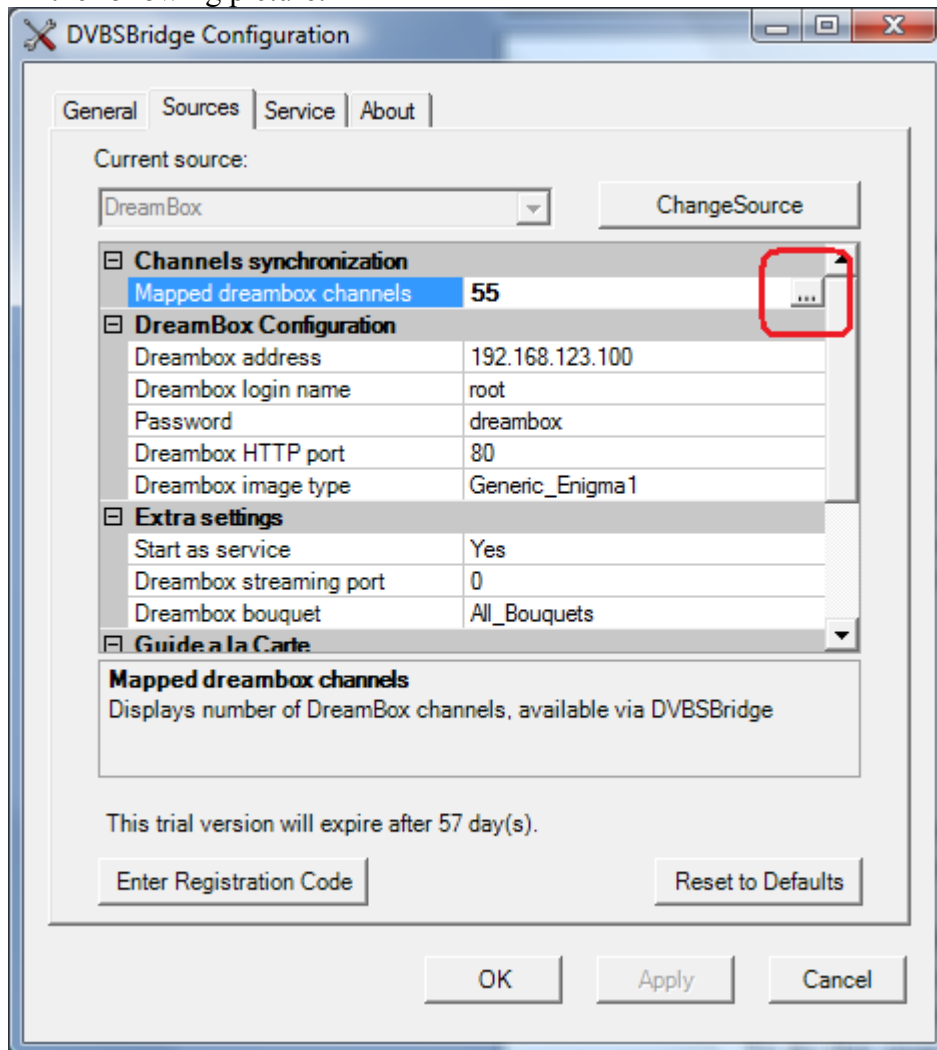
8. Do channel mapping

a. Upgrading from previous version of DVBSBridge Pro for DreamBox

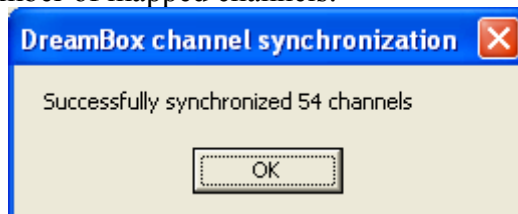
In case of upgrade, copy your old dbmcebridge_channels.ini file over the new one in << installation path of DVBSBridge>>\Sources\DreamBox to restore channel mappings. Also copy your old ChannelMap.xml to << installation path of DVBSBridge>>\EPG\Input. After that proceed to the step 9.

b. Initial installation – channel mapping

In case of initial installation press the mouse left button on the field, showing the number of mapped DreamBox channels. After that press the button with “...” as shown in the following picture:



Configuration utility will download information about all TV bouquets from DreamBox and process it. DVBSBridge can make up to 162 channels available in MCE. When mapping procedure successfully completes you will be presented with the dialog showing number of mapped channels:



If mapping procedure fails you will be presented with the error dialog. Please refer to the Troubleshooting section of this manual to solve the problem.

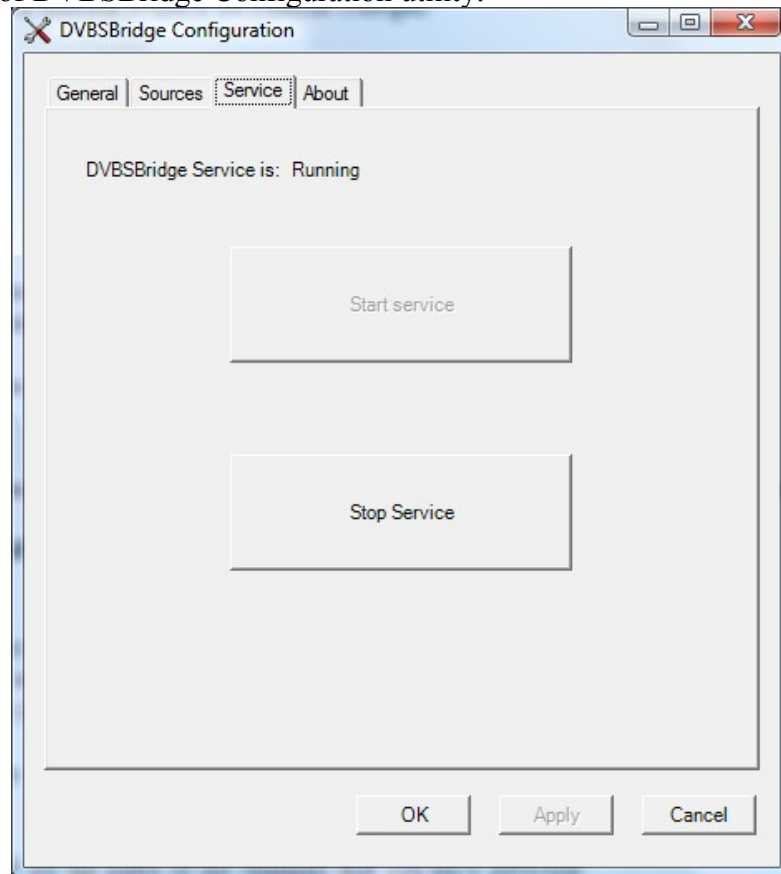
9. Add DVBSBridge service to the Windows Firewall exceptions list

To use UPNP server capabilities of DVBSBridge you must allow DVBSBridge service via Windows firewall.

To do this open Windows Firewall properties, select "Exceptions" tab and press "Add program" button. Navigate to DVBSBridge installation folder, select DVBSBridgeSrv.exe and press Ok button. Close Windows Firewall settings.

10. Restart DVBSBridge service

To apply configuration changes DVBSBridge service has to be (re)started. Select *Service* tab of DVBSBridge Configuration utility:



Press *Stop Service* button and wait until service is stopped. Then press *Start Service* button and wait until service starts.

11. Scan the channels in MCE

At this point DVBSBridge Pro for DreamBox installation is complete and you may proceed with scanning channels in MCE as described below.

Channels scan in MCE

Scanning procedure for European users (countries with DVB-T support)

1. Start MCE
2. Click Setting > TV > Set Up TV Signal
3. Which Region are you using? – Select your country (France, Germany, Netherlands etc.)
4. What type of TV signals do you receive (cable, satellite, antenna)? – select Antenna
5. At this point you may get the choice of possible DVB-T providers in your area. Select "Other digital terrestrial (DVB-T) provider".
6. Click Set Up Guide listings

7. Do you want to use the Guide? – Select “Yes”. The MCE installation wizard will walk you through the steps of MCE Guide installation.

8. Scan for service you can receive.

Click on Scan button.

At this point this process should take around 1-5 minutes and you should see the name of the channels that you have detected.

When the scanning is finished you should be able to tune to the scanned channels and browse the guide.

Scanning procedure for North American users (and all users from the countries without DVB-T support)

1. Start MCE

2. Click Setting > TV > Set Up TV Signal

3. Which Region are you using? – Select Germany

4. What type of TV signal do you receive (cable, satellite, antenna)? – select Antenna

5. Please select the appropriate signal standard for you local TV services (analog-only antenna(NTSC) or Digital terrestrial (DVB-T)? – Select “Digital terrestrial (DVB-T)”

6. Confirmation message appears saying that You Are Done!

7. Click Set Up Guide listings

8. Do you want to use the Guide? – Select “No”. If you click yes MCE will no be able to scan and find your mapped channels.

9. Scan for service you can receive.

Click on Scan button.

At this point this process should take around 1-5 minutes and you should see the name of the channels that you have detected.

When the scanning is finished you should be able to tune to the scanned channels but you don't have a button to view the guide.

10. Once you scan and detect the channel you could try to setup the guide. This step is optional but will allow you to have access to the guide button with all channels without EPG.

DVBSBridge and Vista MediaCenter with TV Pack 2008

Users, running Vista MediaCenter with TV Pack 2008 installed can directly benefit from *teletext, subtitles and EPG information retrieval from transport stream*, performed by this version of MediaCenter itself. There is no specific configuration, which should be done. This functionality works automatically.

Guide a la Carte

How it works

DVBSBridge has a built-in EPG generation engine. This engine takes EPG information from different sources (which are configurable per channel) and translates it into EIT packets. These are special transport stream packets, meant to carry EPG data. These packets are standardized by DVB committee and are used by most of DVB receivers and computer programs to parse and visualize EPG data.

Generated EIT packets are sent to MCE with the original transport stream as they have come from the actual service provider. MCE picks this EPG information up from the stream and presents it to a user as a part of it Guide.

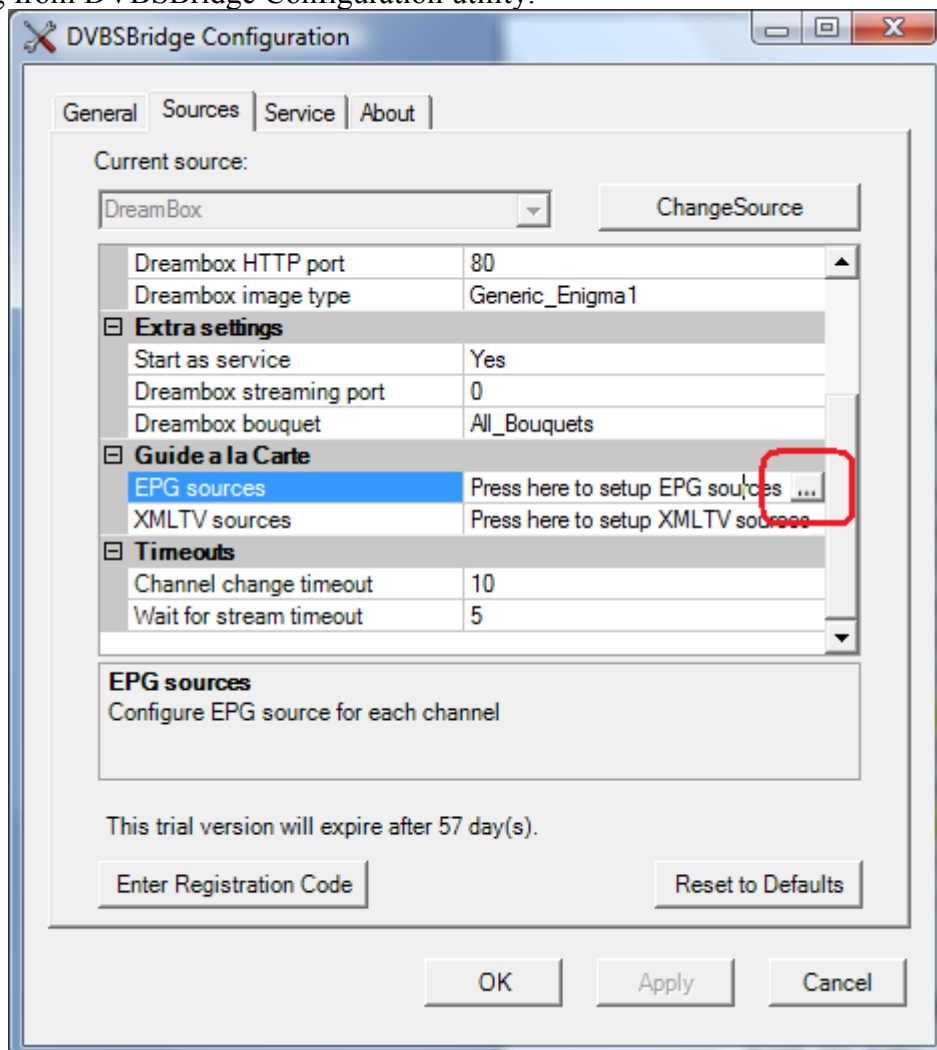
EPG source configuration

The actual source of EPG information can be setup for each channel. User has a choice from

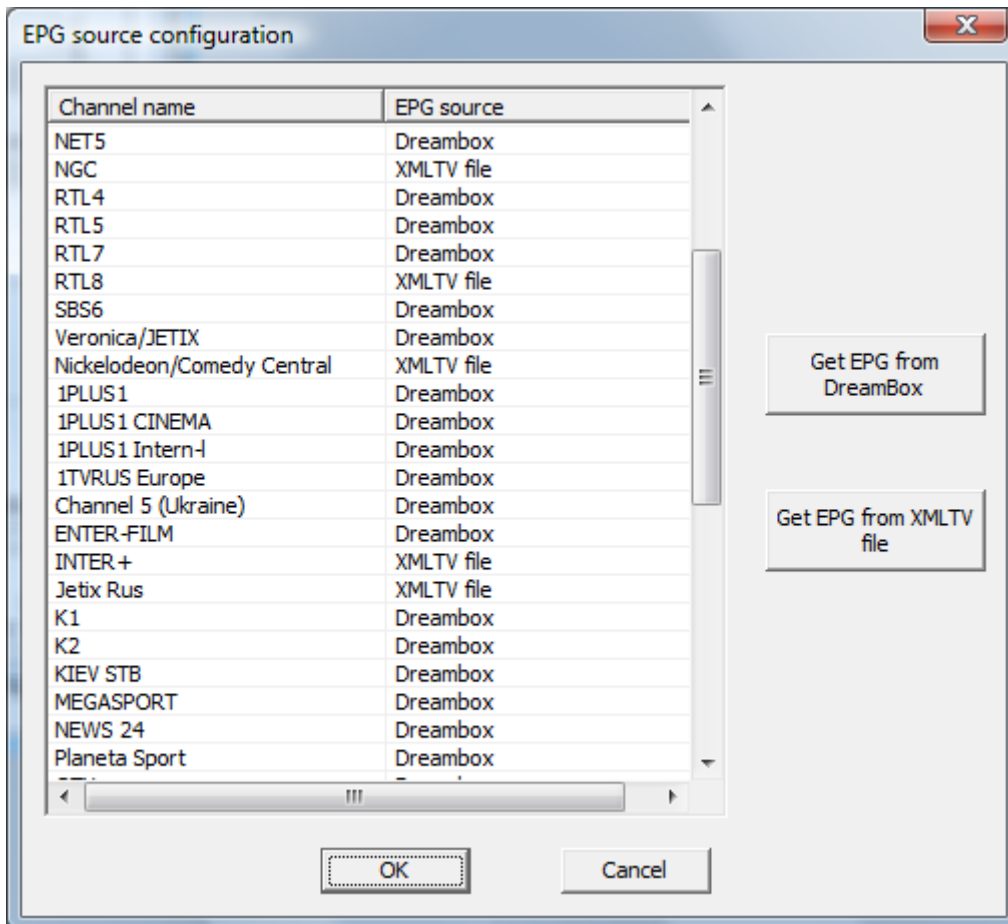
- MCE built-in EPG information provider
- Dreambox (as parsed from transport stream)
- XMLTV files

Vista MediaCenter uses its built-in EPG information provider by default.

To configure alternative EPG information source start EPG Source Configuration dialog from DVBSBridge Configuration utility:



When started, EPG Source Configuration dialog will present user with a list of channels and show current EPG information source for each channel:



User can select then one multiple channels and assign new source of EPG information to them. When editing of EPG sources is finished, press Ok button to save new settings.

XMLTV sources configuration

XMLTV EPG information is delivered in form of xml files. These files have internal structure, described by XMLTV standard (<http://www.xmltv.org/>).

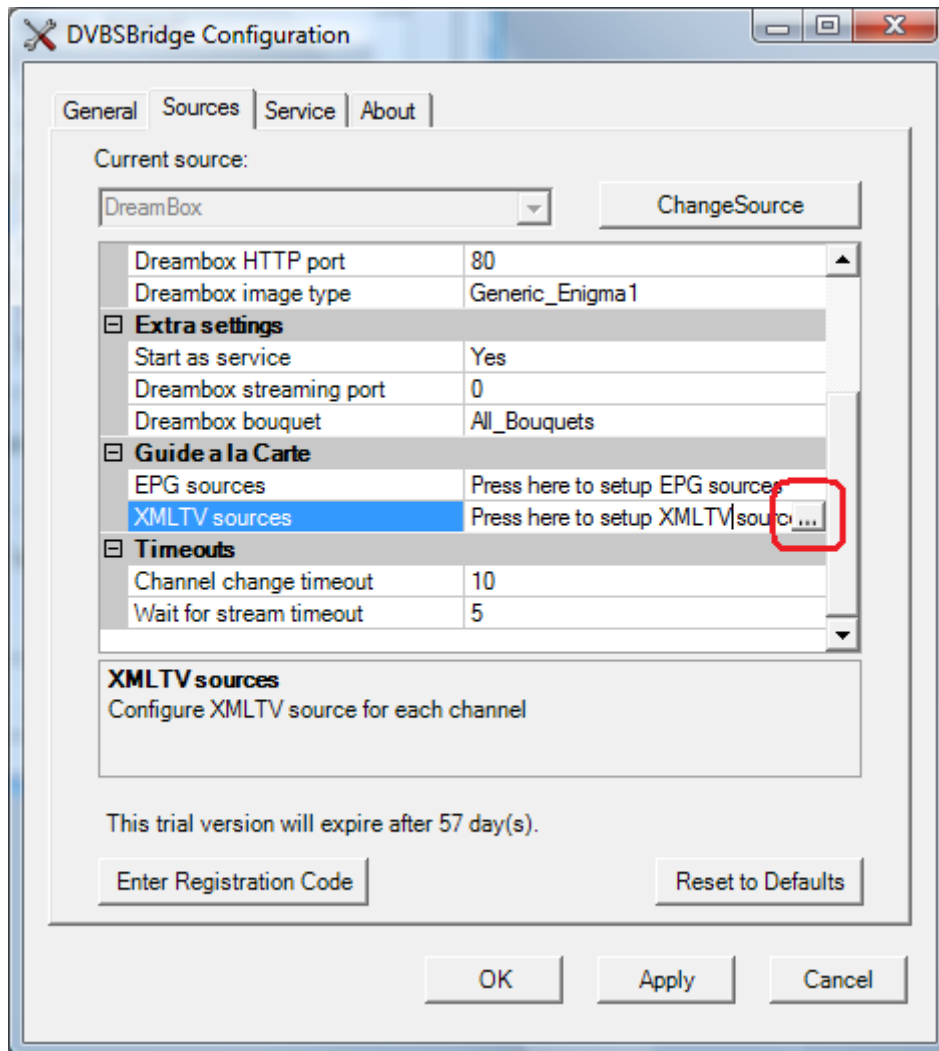
DVBSBridge reads all xmltv files from <<DVBSBridge installation path>>\EPG\Input directory (further referred to as *XMLTV Input directory*).

Each xmltv file consists of a channel description section and a program description section. The first one lists all channels, present in the xml file, and their properties.

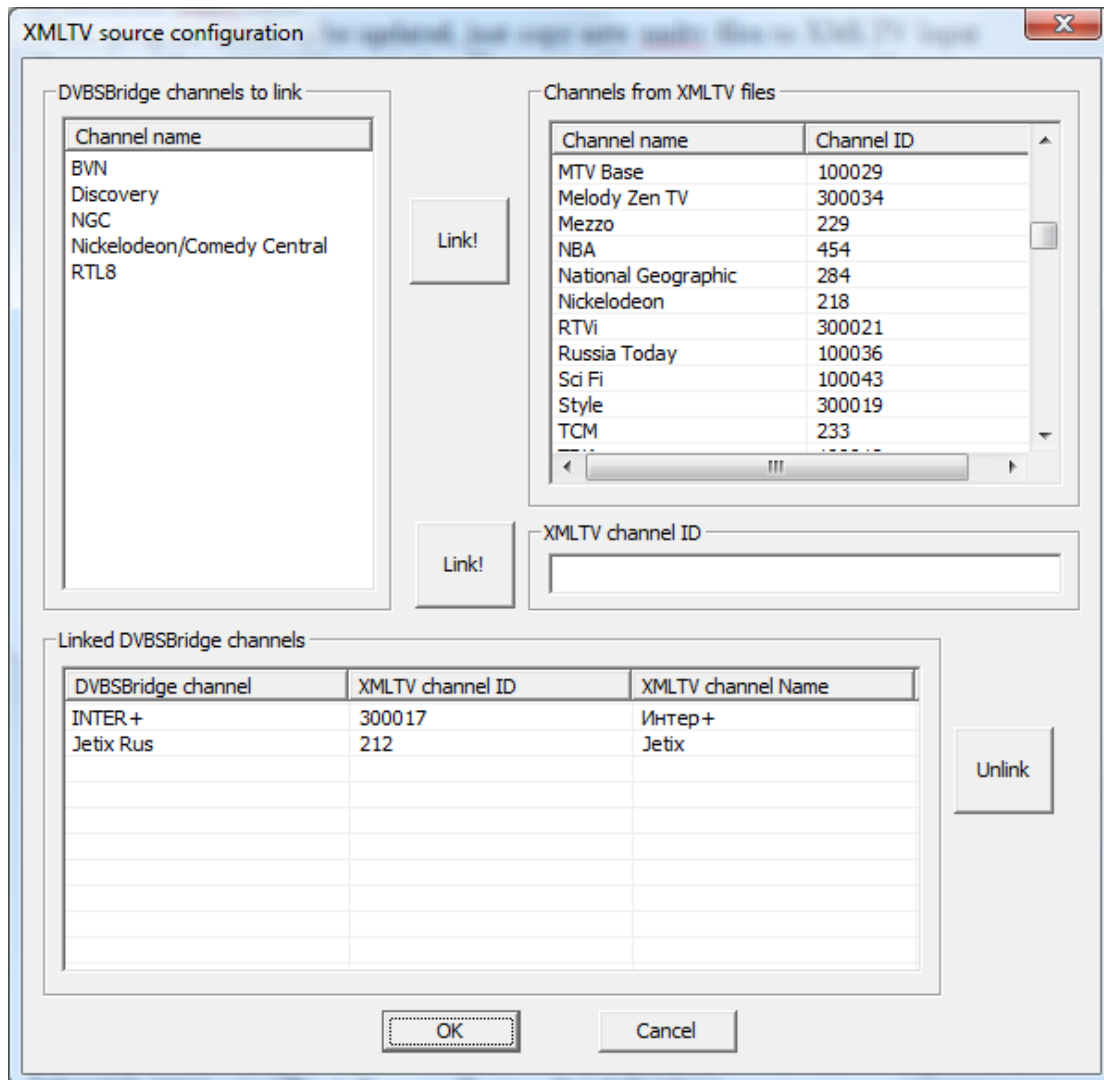
The second one contains actual program for each channel. Each xmltv channel should be uniquely identified by its *channel id*. For example consider the following excerpt from xmltv file, showing structure of a channel description:

```
<channel id="293">
<display-name lang="eng">Travel</display-name>
</channel>
```

For DVBSBridge EPG generation engine to work properly each xmltv channel id has to be linked to a correspondent DVBSBridge channel. This task can be easily done with XMLTV Source Configuration dialog. This dialog can be started from DVBSBridge Configuration utility:



When started, XMLTV Source Configuration dialog presents user with the following information:



The pane on the left shows all DVBSBridge channels, having XMLTV file as a source of EPG information, and not yet linked to any of XMLTV channels. The pane on the right shows all channels, parsed from XMLTV files, found in XMLTV Input directory.

The pane at the bottom shows all DVBSBridge channels, having XMLTV file as a source of EPG information, which are already linked to XMLTV channels. To link DVBSBridge channel to a XMLTV channel select these channels in the left and right panes and press link button.

To unlink already linked channel select this channel in the bottom pane and press unlink button.

It is possible to link a DVBSBridge channel to some XMLTV channel even if it is not yet available in xmltv files, which reside in XMLTV Input directory. In this case select desired DVBSbridge channel in the left pane, input expected XMLTV channel ID into correspondent input line and press link button.

When editing is finished, press Ok button to save new channel linking. This information is saved to ChannelMap.xml file in XMLTV Input directory. Do not delete this file as in this case you will have to do channel linking again.

XMLTV file management

DVBSBridge reads all xmltv files from XMLTV Input directory on its start-up and re-reads them every hour. Program for each channel is aggregated from all parts, found in different xmltv files.

When program needs to be updated, just copy new xmltv files to XMLTV Input directory either overwriting existing files or putting new ones next to old ones.

DVBSBridge can handle up to 3 months of program information.

For the efficiency reasons it is strongly advised to remove (very) old and unreferenced EPG information from xmltv files, residing in XMLTV Input directory.

Make changes effective

To make the changes in EPG or XMLTV Source configuration effective restart DVBSBridge service. To do this start DVBSBridge Configuration Utility. Select *Service* tab. Press *Stop Service* button and wait until service is stopped. Then press *Start Service* button and wait until service starts.

UPNP Server

DVBSBridge Pro for DreamBox includes UPNP server. This UPNP server sends live TV signal to the UPNP-enabled clients.

There is no special configuration needed for the server to start working. As soon as DVBSBridge service starts, it begins broadcasting its services.

DVBSBridge UPNP Server appears as “DVBSBridge TV Server” in the UPNP client listing and allows browsing and playing TV channels.

The DVBSBridge UPNP server should work with a number of software and hardware clients, such as Nero ShowTime v4, Cyberlink PowerDVD v7 and v8, Sony PlayStation 3 etc.

Please note that MCE and UPNP server share the single tuner. As such requests for channel changes from UPNP client will interrupt viewing TV in MCE and vice versa.

XMLTV file generation

DVBSBridge has built-in EPG parser, which scans all channels, parses EPG information that comes from Guide a la Carte engine and saves it to XMLTV file. The scanning happens twice a day during idle time and as such does not influence playback or recording of satellite stream. The saved XMLTV file can be imported in XP MCE 2005 using BladeRunner (Pro) or QuickGuide.

Enable XMLTV file generation in DVBSBridge

To enable XMLTV file generation start DVBSBridge Configuration Utility, go to *General* tab and set *XMLTV info generation enabled* value to *true*. Press Ok to apply the changes and close the Configuration Utility.

Make changes effective

To make the changes effective restart DVBSBridge service. To do this start DVBSBridge Configuration Utility. Select *Service* tab. Press *Stop Service* button and wait until service is stopped. Then press *Start Service* button and wait until service starts.

Import XMLTV data in XP MCE 2005

DVBSBridge saves scanned EPG information to *EPG* directory of DVBSBridge installation folder. There are two files created:

- DVBSBridgeEPGInfo.xml – this file contains combined EPG information (for all scanned channels) in xmltv format.
- ChannelInfo.xml – this file contains information about scanned channels themselves and is required for proper QuickGuide or BladeRunner (Pro) integration.

DVBSBridge is “plug-n-play” compatible with QuickGuide and BladeRunner (Pro). These applications can directly import the files, created by DVBSBridge to populate XP MCE 2005 Guide information.

Troubleshooting

Troubleshooting during installation

1. If you during installation you get a message box saying “*There is a problem with this Windows Installer package. A program run as part of the setup did not finish as expected. Contact your support personnel or package vendor.*” than it means that UAC is still enabled on your PC and this prevents DVBSBridge to be installed successfully. To correct the problem please turn off UAC.

Troubleshooting communication with DreamBox

If DVBSBridge has problems in communication with DreamBox or processing its responses, the following things have to be checked:

- Check whether DreamBox is reachable from computer where DVBSBridge runs. To do this open browser and type DreamBox IP address in browser’s address bar. If communication with DreamBox is working correctly browser should show dreambox web control interface in its window.

Troubleshooting during channel scanning

1. MCE only detects channels, which can be viewed in DreamBox itself (e.g. produce correct picture and sound). It means that if MCE cannot find certain channels during it scanning procedure, it should be checked first whether these channels are viewable in DreamBox.
2. If there are no (or not all) channels found, please remember that DVBSBridge assumes that the whole DVB-T frequency range is available. In certain countries it might be not so evident. To verify this assumption, change the MCE region to Germany and redo the scan.
3. You can also use DVBSBridge Frequency Detector utility to profile the DVB-T frequencies, which are available in your region.
4. (*Advanced*) Set LogLevel setting at Sources tab of DVBSBridge configuration utility to “Info” and redo the scan. Examine the log file (dvbsbridge.log in <<DVBSBridge installation folder>>) for possible errors.

If all of the above fails, please visit our forum at www.dvblogic.com

DVBSBridge Frequency Detector

This small utility detects the DVB-T frequencies as used by MCE during "Scan for services" operation.

It should be used when "Scan for Services" operation in MCE finds none of the mapped channels or not all mapped channels. The reason for this problem may be in the fact that MCE scans not all DVB-T frequencies depending on selected Region. The utility itself is located in <<DVBSBridge installation path>>\Sinks\BDA or accessible through Start menu. Before you start using the utility you have to have DVBSBridge service installed.

Usage

Stop DVBSBridge service if it is running before using the utility.

Start MBFreqDetector.exe.

Start MCE and perform "Scan for services". During the scanning process DVBSBridge Frequency Detector will show a number of detected DVB-T frequencies.

When MCE finishes scanning process, stop DVBSBridge Frequency Detector by pressing "Save and close" button. This will save all detected frequencies to channels.ini file, located next to MBFreqDetector.exe file.

Rename the channels.ini into dvmcebridge_channels.ini and put it into correspondent Source directory, overwriting the original ini file.

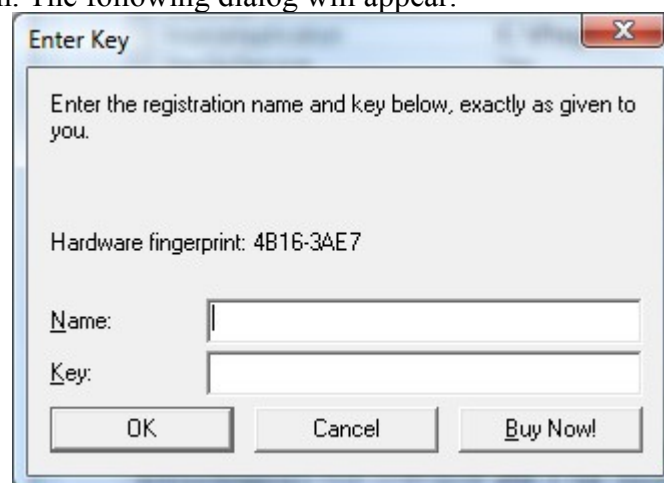
Perform the channel mapping of your source program as usual, start DVBSBridge service and perform "Scan for services" in MCE again.

Now MCE should find all mapped channels.

Registration

If you tried a trial version of DVBSBridge Pro for DreamBox and decide to buy it, here is what you have to do:

1. Start DVBSBridge Configuration utility
2. At the left bottom of the Sources tab of the DVBSBridge Configuration utility you should see your registration information:
 - a. If your current version is a trial version, this will be displayed together with a number of evaluation days left
 - b. If your current version is a registered version, then name of the owner and a key will be displayed.
3. To register the DVBSBridge Pro for DreamBox, click on "Enter Registration Code" button. The following dialog will appear:



Enter Key

Enter the registration name and key below, exactly as given to you.

Hardware fingerprint: 4B16-3AE7

Name:

Key:

OK Cancel Buy Now!

4. You have to write down the Hardware fingerprint and mention it when sending a registration payment at DVBSBridge website.

5. Shortly after that you will receive your key. When you have it, start DVBSBridge Configuration utility again, press “Enter Registration Code” button and enter your registration information: name and a key, exactly as it was sent to you.
6. If correct registration information is entered, DVBSBridge Pro for DreamBox becomes registered and you may enjoy it as long as you like.
7. Do not forget to restart DVBSBridge service for registration information to become effective.

Please remember that registration information of DVBSBridge Pro for DreamBox is locked to a specific PC, where it is used. It might happen that after HW changes the registration information becomes invalid. If this is the case, you have just to reenter your registration information in DVBSBridge Configuration utility. A single key supports up to 4 hardware changes. Should you go beyond this number, please contact DVBLogic at info@dvblogic.com to get a new key.