

# **DVBSBridge for DVBViewer – installation and configuration**

## Table of contents

Installation.....	3
Preconditions.....	3
Upgrade from previous version of DVBSBridge for DVBViewer.....	3
DVBSBridge for DVBViewer Installation .....	3
Channels scan in MCE.....	9
Scanning procedure for European users (countries with DVB-T support).....	9
Scanning procedure for North American users (and all users from the countries without DVB-T support).....	10
EPG Scanning .....	10
Enable EPG scanning in DVBSBridge .....	10
Make changes effective.....	10
Import EPG data in MCE.....	11
Troubleshooting .....	11
Troubleshooting during installation.....	11
Troubleshooting during operations .....	11
Troubleshooting during channel scanning.....	11
DVBSBridge Frequency Detector .....	12
Usage.....	12
Registration.....	12

# Installation

## ***Preconditions***

Your current user has to have Administrator privileges.  
If you are running under Vista, please turn off UAC.

## ***Upgrade from previous version of DVBSBridge for DVBViewer***

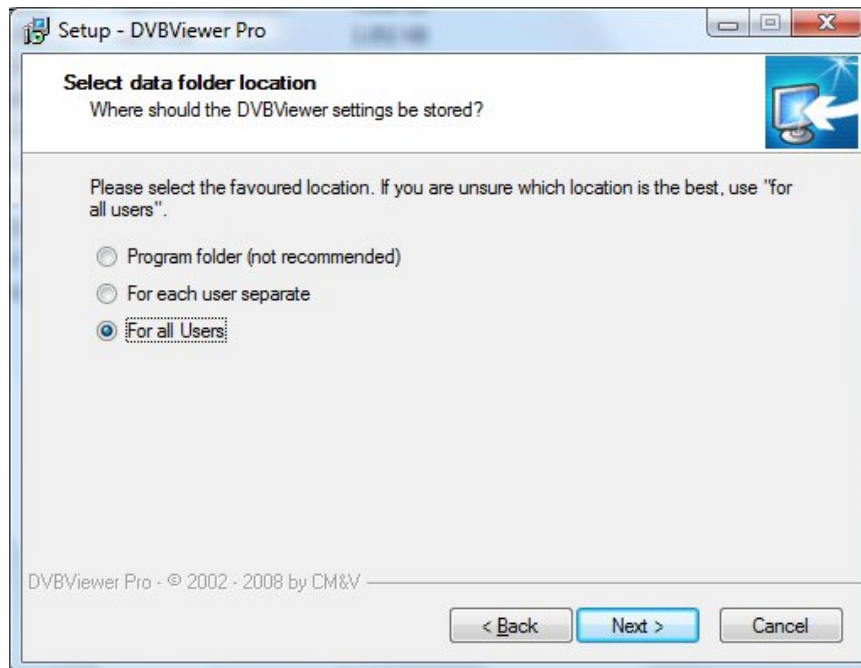
If you are upgrading from the previous version of DVBSBridge for DVBViewer, you should do the following before you start installation of the new version:

- Save your existing **dvmcebridge\_channels.ini** (from <<current installation path of DVBSBridge>>\Sources\DVBViewer). You will need this file after the installation to restore your channel mappings.
- If you have changed default configuration values of DVBSBridge for DVBViewer source plugin, please remember those changes. You will have to reapply them after installation completes.
- ***Uninstall existing version of DVBSBridge source plugin for DVBViewer, uninstall DVBSBridge service from Control Panel and reboot the computer as prompted.***

## ***DVBSBridge for DVBViewer Installation***

### **1. Install DVBViewer**

If you do not have it installed yet, install DVBViewer Pro version 3.9.0.0 or higher.  
***Important!*** During DVBViewer installation, when prompted where DVBViewer settings should be stored on your computer, select “For all users” option as shown in the picture below:



After installation, scan the channels and make sure that you can watch them in DVBViewer.

### **2. Install DVBSBridge service**

To install DVBSBridge service start **DVBSBridge.msi** installation file. Once it is started you will be presented with the installation wizard. Follow the instructions of this wizard to install the software.

In course of installation you will be prompted by operating system whether to continue installation of unsigned (unverified) drivers. Answer Yes or Continue to these questions.

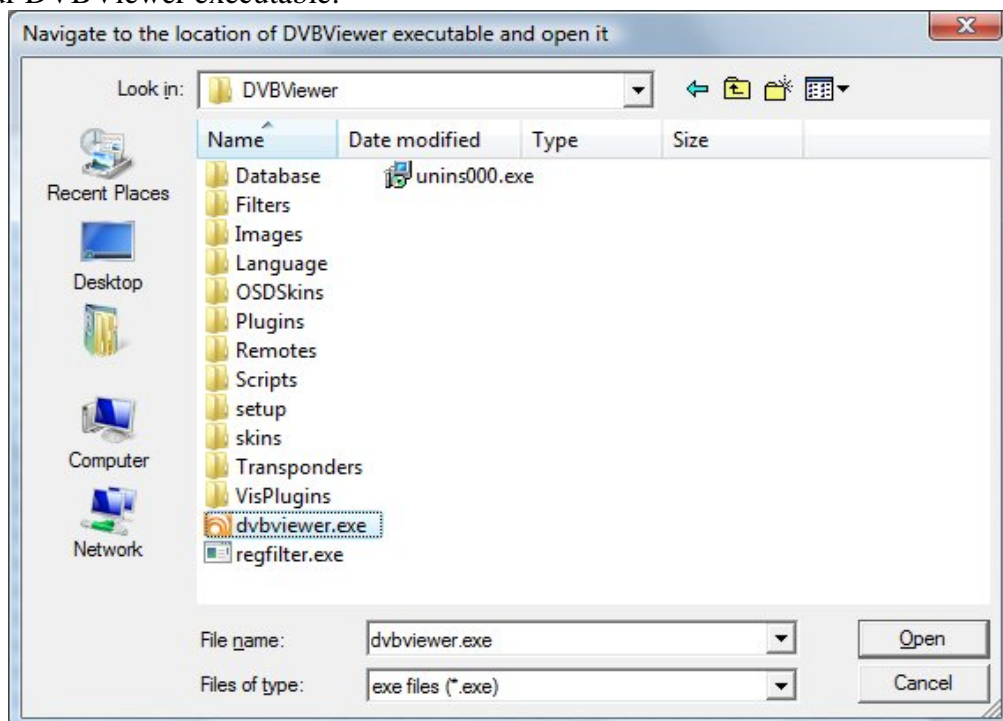
Once installation is completed you will be prompted to reboot the system. **Please reboot**. When system is rebooted, proceed with DVBSBridge for DVBSViewer source plugin installation.

### 3. Install DVBSBridge for DVBSViewer source plugin

To install DVBSBridge for DVBSViewer source plugin, start **DVBSBridgeDV.msi** installation executable. Once it is started you will be presented with the installation wizard. Follow the instructions of this wizard to install the software.

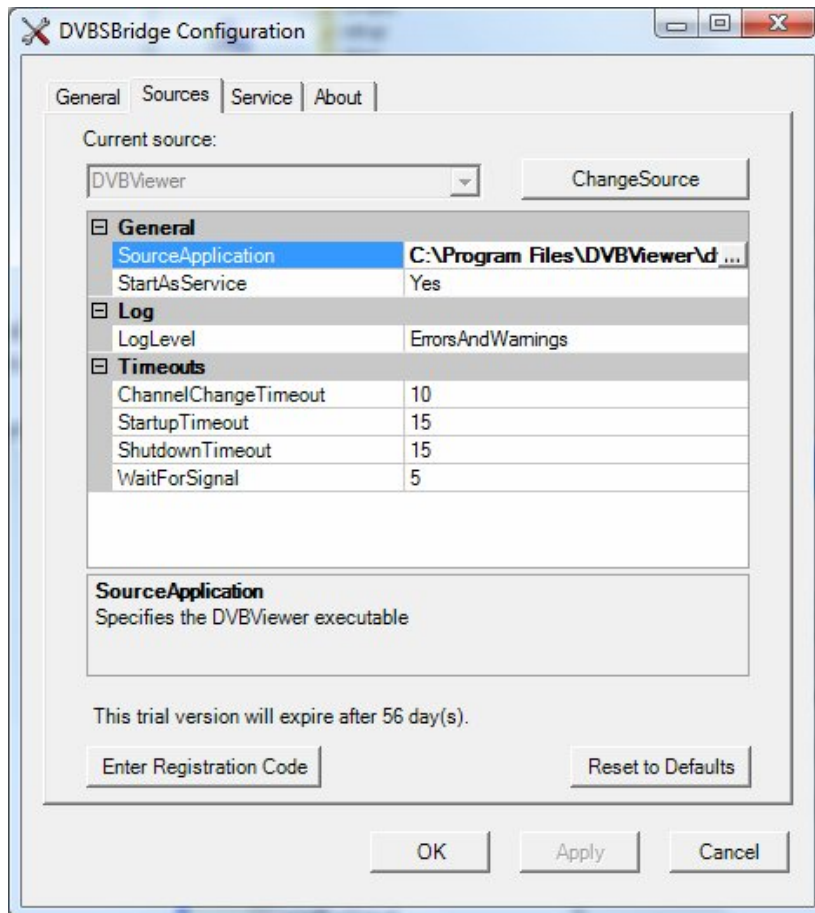
### 4. Select location of your DVBSViewer installation

In the course of installation you will be presented with dialog to select the location of your DVBSViewer executable:



Navigate to the location on your hard disk where you have DVBSViewer installed, select dvbviewer.exe file and press Open.

When DVBSBridge for DVBSViewer installation wizard completes it will automatically launch DVBSBridge Configuration Utility. On the *Sources* tab up can see your registration information and validity of the trial version:



### 5. (optional) For users with motorized satellite dish

Users with motorized satellite dish should set *WaitForSignal* value to 10-15 seconds, depending on the speed of the motor

### 6. Apply configuration changes

Press Ok button to apply configuration changes. This will close DVBSBridge Configuration utility.

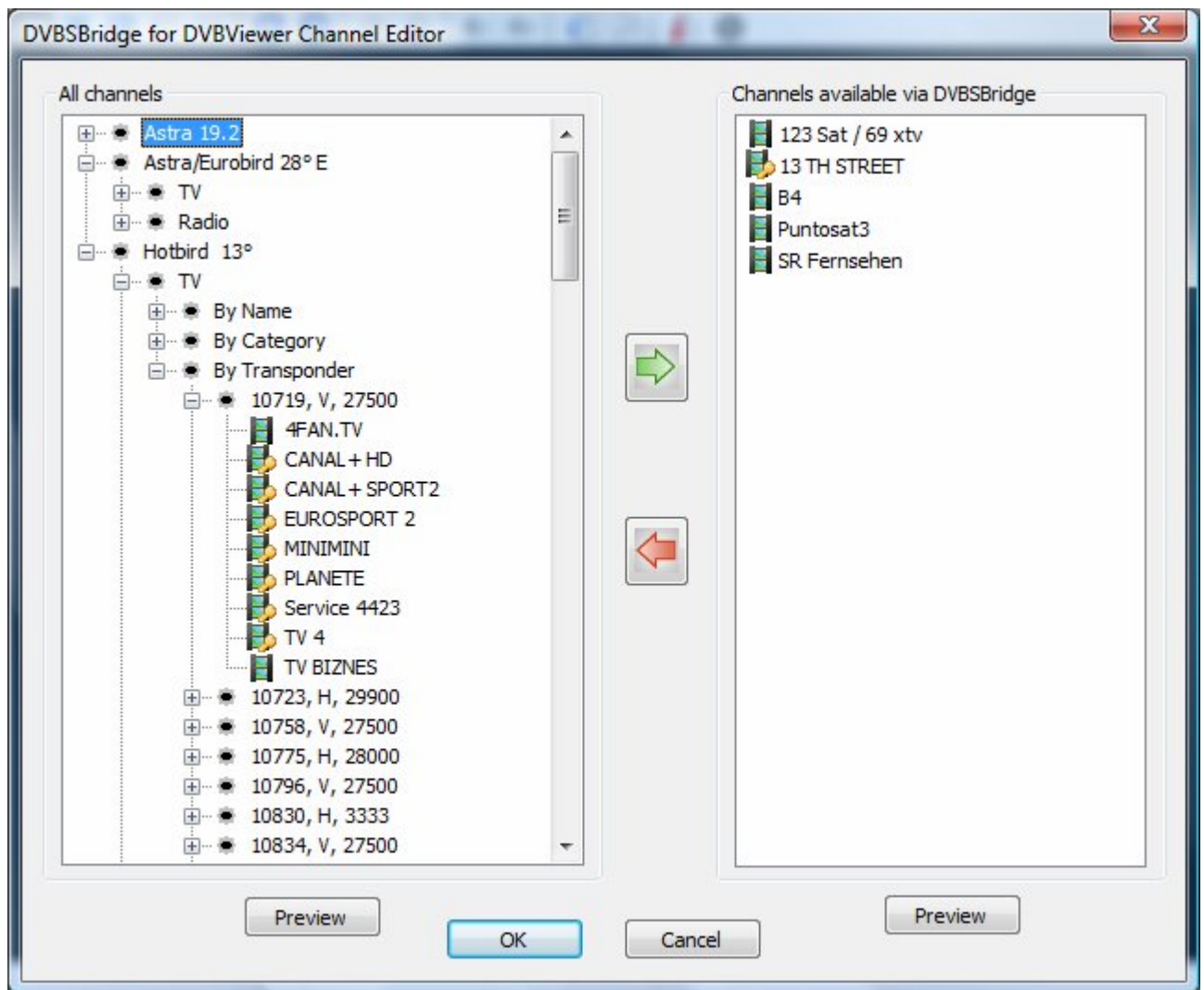
### 7. Do channel mapping

#### a. Upgrading from previous version of DVBSBridge for DVBViewer

In case of upgrade, copy your old `dvmcebridge_channels.ini` file over the new one in `<< installation path of DVBSBridge >>\Sources\DVBViewer` to restore channel mappings. After that proceed to the step 8.

#### b. Initial installation – channel mapping

In case of initial installation launch DVBViewer. DVBSBridge for DVBViewer minimizes DVBViewer at startup, so you need to restore the DVBViewer window. From DVBViewer menu select Plugins -> MCE Bridge -> Channel Configuration. The following dialog will appear:



From the panel on the left select the channels, which you would like to be available via DVBSBridge and add them to the right panel by pressing a button with green arrow or double clicking on them.

To remove channels from DVBSBridge mapping, select channels in the right pane (you can select more than one by pressing and holding Shift or Ctrl keys while clicking mouse buttons) and press a button with red arrow.

You can also preview a particular channel in DVBViewer by selecting it and pressing Preview button.

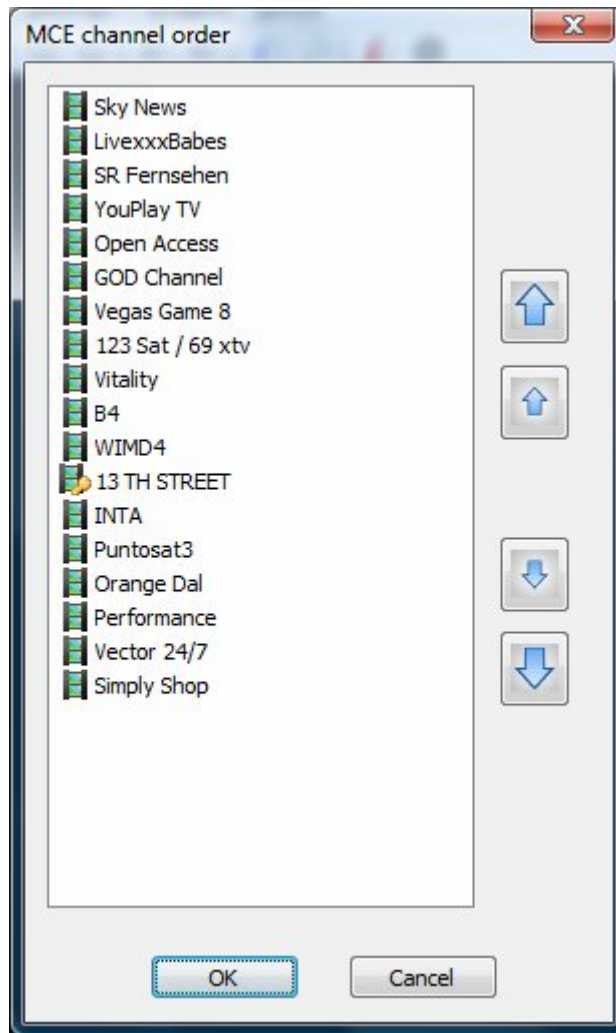
Save your channel selection by pressing Ok button in the dialog.

### c. Initial installation – MCE channel sorting

To sort channels how they will appear after scanning in Windows Media Center, select from DVBViewer menu Plugins -> MCE Bridge -> MCE Channel Order.

***It is important to know*** that channel order, as specified by this DVBSBridge functionality, will only be picked up by MCE during ***initial channel scanning only*** (e.g. when you do not have any channels already scanned in MCE or you will delete all your already scanned channels before the new channel scan).

The following dialog will appear:



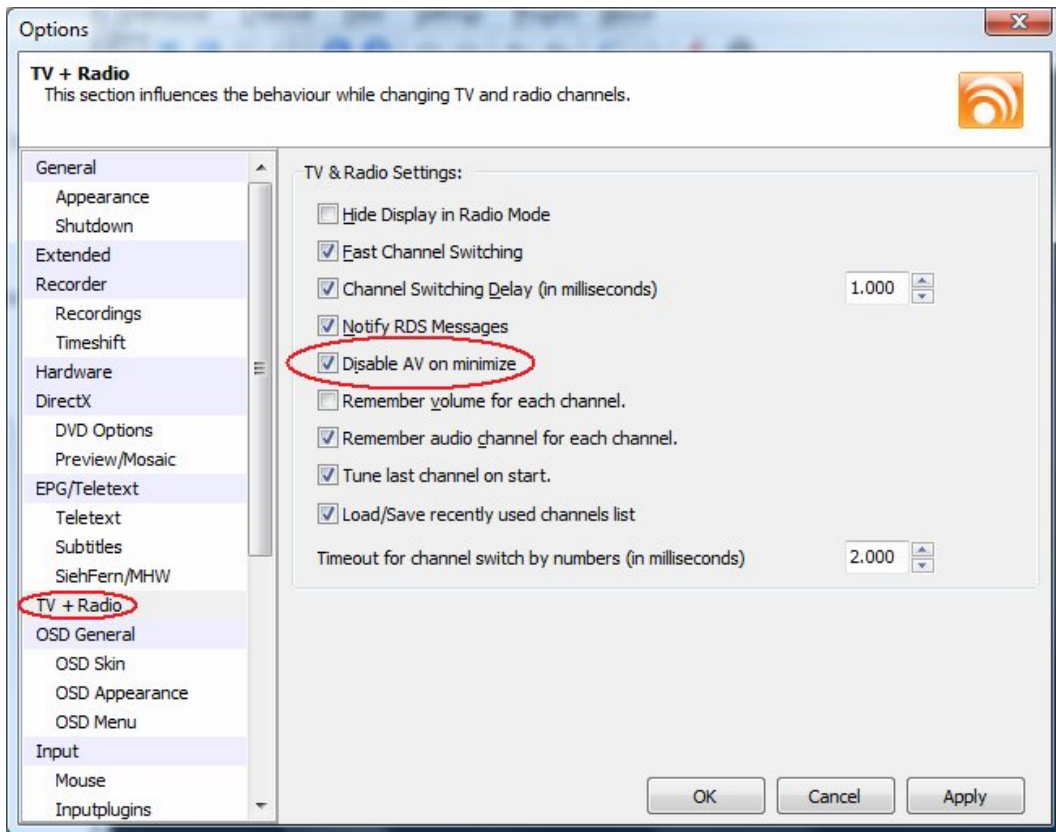
You can select one or several channels in the list and move them up and down by using arrow buttons on the right.

When finished, save your channel order by pressing Ok button in the dialog.

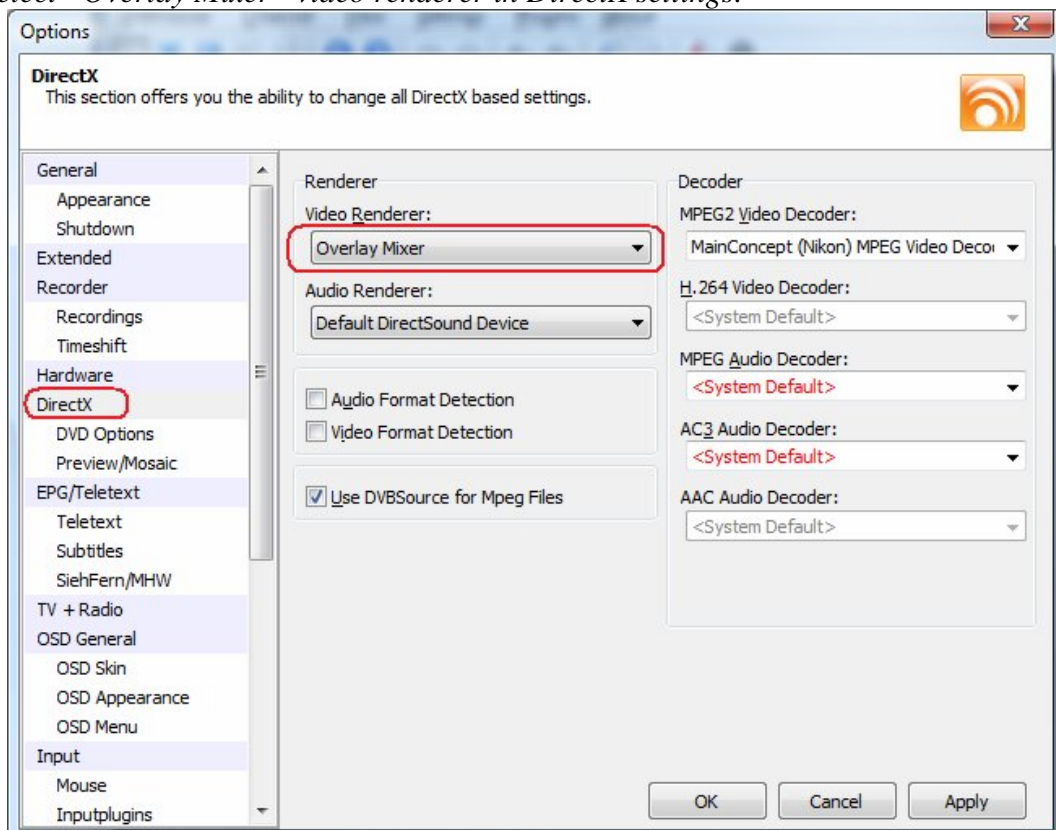
#### **d. Initial installation – change some DVBSViewer settings**

To optimize the DVBSViewer performance for work with DVBSBridge, you should change a number of DVBSViewer settings. From DVBSViewer menu select Settings -> Options. Then do the following:

*Check “Disable AV on minimize” option in TV+Radio settings:*



Select “Overlay Mixer” video renderer in DirectX settings:



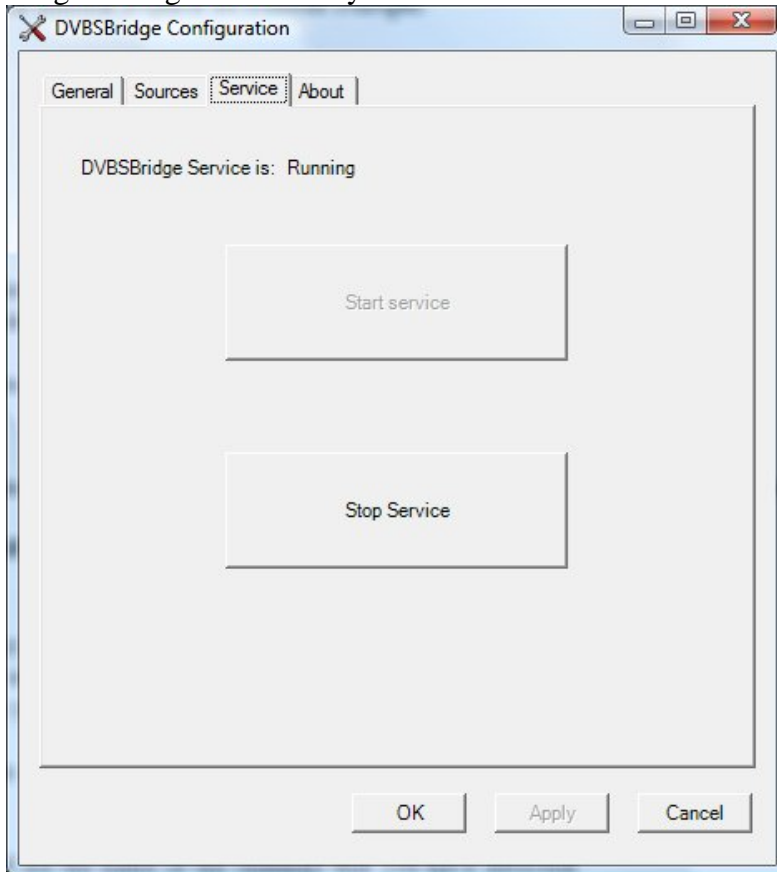
It is also recommended to set the audio volume in DVBCViewer to 0 to avoid audible artifacts on channel changes.

#### e. Initial installation – close DVBSViewer

When all configuration changes are finished – close DVBSViewer.

#### 8. Restart DVBSBridge service

Start DVBSBridge Configuration Utility. Select *Service* tab:



Press *Stop Service* button and wait until service is stopped. Then press *Start Service* button and wait until service starts.

Launch Windows Task Manager and check whether DVBSViewer is running also.

#### 9. Scan the channels in MCE

At this point DVBSBridge for DVBSViewer installation is complete and you may proceed with scanning channels in MCE as described below.

#### ***Channels scan in MCE***

#### **Scanning procedure for European users (countries with DVB-T support)**

1. Start MCE
2. Click Setting > TV > Set Up TV Signal
3. Which Region are you using? – Select your country (France, Germany, Netherlands etc.)
4. What type of TV signals do you receive (cable, satellite, antenna)? – select Antenna
5. At this point you may get the choice of possible DVB-T providers in your area. Select “Other digital terrestrial (DVB-T) provider”.

6. Click Set Up Guide listings
7. Do you want to use the Guide? – Select “Yes”. The MCE installation wizard will walk you through the steps of MCE Guide installation.
8. Scan for service you can receive.

Click on Scan button.

At this point this process should take around 1-5 minutes and you should see the name of the channels that you have detected.

When the scanning is finished you should be able to tune to the scanned channels and browse the guide.

### **Scanning procedure for North American users (and all users from the countries without DVB-T support)**

1. Start MCE
2. Click Setting > TV > Set Up TV Signal
3. Which Region are you using? – Select Germany
4. What type of TV signal do you receive (cable, satellite, antenna)? – select Antenna
5. Please select the appropriate signal standard for you local TV services (analog-only antenna(NTSC) or Digital terrestrial (DVB-T)? – Select “Digital terrestrial (DVB-T)”
6. Confirmation message appears saying that You Are Done!
7. Click Set Up Guide listings
8. Do you want to use the Guide? – Select “No”. If you click yes MCE will no be able to scan and find your mapped channels.
9. Scan for service you can receive.

Click on Scan button.

At this point this process should take around 1-5 minutes and you should see the name of the channels that you have detected.

When the scanning is finished you should be able to tune to the scanned channels but you don't have a button to view the guide.

10. Once you scan and detect the channel you could try to setup the guide. This step is optional but will allow you to have access to the guide button with all channels without EPG.

## **EPG Scanning**

DVBSBridge has built-in EPG parser, which parses EPG information that comes with the satellite stream. The scanning happens twice a day during idle time and as such does not influence playback or recording of satellite stream. The scanned EPG information is saved in xmltv format and should be imported in MCE using BladeRunner (Pro) or QuickGuide.

### ***Enable EPG scanning in DVBSBridge***

To enable EPG scanning in DVBSBridge start DVBSBridge Configuration Utility, go to *General* tab and set *EPGParsingEnabled* value to *true*. Press Ok to apply the changes and close the Configuration Utility.

### ***Make changes effective***

To make the changes effective restart DVBSBridge service. To do this start DVBSBridge Configuration Utility. Select *Service* tab. Press *Stop Service* button and

wait until service is stopped. Then press *Start Service* button and wait until service starts.

## ***Import EPG data in MCE***

DVBSBridge saves scanned EPG information to *EPG* directory of DVBSBridge installation folder. There are two files created:

- DVBSBridgeEPGInfo.xml – this file contains combined EPG information (for all scanned channels) in xmltv format.
- ChannelInfo.xml – this file contains information about scanned channels themselves and is required for proper QuickGuide or BladeRunner (Pro) integration.

DVBSBridge is “plug-n-play” compatible with QuickGuide and BladeRunner (Pro). These applications can directly import the files, created by DVBSBridge to populate MCE Guide information.

## **Troubleshooting**

### ***Troubleshooting during installation***

1. If you during installation you get a message box saying “*There is a problem with this Windows Installer package. A program run as part of the setup did not finish as expected. Contact your support personnel or package vendor.*” than it means that UAC is still enabled on your PC and this prevents DVBSBridge to be installed successfully. To correct the problem please turn off UAC.

### ***Troubleshooting during operations***

1. When DVBViewer is started interactively, it does not work or cannot initialize satellite hardware. If DVBSBridge service is started it also starts DVBViewer. This instance of DVBViewer is not visible to the interactive user, but it is used by DVBSBridge to tune the channels for MCE. As a result, when user starts DVBViewer interactively, it starts in fact the second instance of DVBViewer, which uses the same hardware. This is the reason why it does not work properly. To solve the problem stop DVBSBridge service via DVBSBridge Configuration Utility. It will also stop the DVBViewer.

### ***Troubleshooting during channel scanning***

1. MCE only detects channels, which can be viewed in DVBViewer itself (e.g. produce correct picture and sound). It means that if MCE cannot find certain channels during it scanning procedure, it should be checked first whether these channels are viewable in DVBViewer.
2. If no channels are found when DVBViewer is running under the DVBSBridge service, but channels can be found successfully when DVBViewer is running standalone, please make sure that you have installed DVBViewer for “all users” as described in this manual before.
3. If there are no (or not all) channels found, please remember that DVBSBridge assumes that the whole DVB-T frequency range is available. In certain countries it might be not so evident. To verify this assumption, change the MCE region to Germany and redo the scan.
4. You can also use DVBSBridge Frequency Detector utility to profile the DVB-T frequencies, which are available in your region.

5. (*Advanced*) Set LogLevel setting at Sources tab of DVBSBridge configuration utility to "Info" and redo the scan. Examine the log file (dvmcebridge.log in Sources\DVBViewer) for possible errors.

If all of the above fails, please visit our forum at [www.dvblogic.com](http://www.dvblogic.com)

## DVBSBridge Frequency Detector

This small utility detects the DVB-T frequencies as used by MCE during "Scan for services" operation.

It should be used when "Scan for Services" operation in MCE finds none of the mapped channels or not all mapped channels. The reason for this problem may be in the fact that MCE scans not all DVB-T frequencies depending on selected Region. The utility itself is located in <<DVBSBridge installation path>>\Sinks\BDA or accessible through Start menu. Before you start using the utility you have to have DVBSBridge service installed.

### Usage

Close DVBViewer before using the utility. Stop DVBSBridge service if it is running. Start MBFreqDetector.exe.

Start MCE and perform "Scan for services". During the scanning process DVBSBridge Frequency Detector will show a number of detected DVB-T frequencies.

When MCE finishes scanning process, stop DVBSBridge Frequency Detector by pressing "Save and close" button. This will save all detected frequencies to channels.ini file, located next to MBFreqDetector.exe file.

Rename the channels.ini into dvmcebridge\_channels.ini and put it into correspondent Source directory, overwriting the original ini file.

Perform the channel mapping of your source program as usual, start DVBSBridge service and perform "Scan for services" in MCE again.

Now MCE should find all mapped channels.

## Registration

If you tried a trial version of DVBSBridge for DVBViewer and decide to buy it, here is what you have to do:

1. Start DVBSBridge Configuration utility
2. At the left bottom of the Sources tab of the DVBSBridge Configuration utility you should see your registration information:
  - a. If your current version is a trial version, this will be displayed together with a number of evaluation days left
  - b. If your current version is a registered version, then name of the owner and a key will be displayed.
3. To register the DVBSBridge for DVBViewer, click on "Enter Registration Code" button. The following dialog will appear:



4. You have to write down the Hardware fingerprint and mention it when sending a registration payment at DVBSBridge website.
5. Shortly after that you will receive your key. When you have it, start DVBSBridge Configuration utility again, press “Enter Registration Code” button and enter your registration information: name and a key, exactly as it was sent to you.
6. If correct registration information is entered, DVBSBridge for DVBViewer becomes registered and you may enjoy it as long as you like.
7. Do not forget to restart DVBSBridge service for registration information to become effective.

Please remember that registration information of DVBSBridge for DVBViewer is locked to a specific PC, where it is used. It might happen that after HW changes the registration information becomes invalid. If this is the case, you have just to reenter your registration information in DVBSBridge Configuration utility. A single key supports up to 4 hardware changes. Should you go beyond this number, please contact DVBLogic at [info@dvblogic.com](mailto:info@dvblogic.com) to get a new key.